



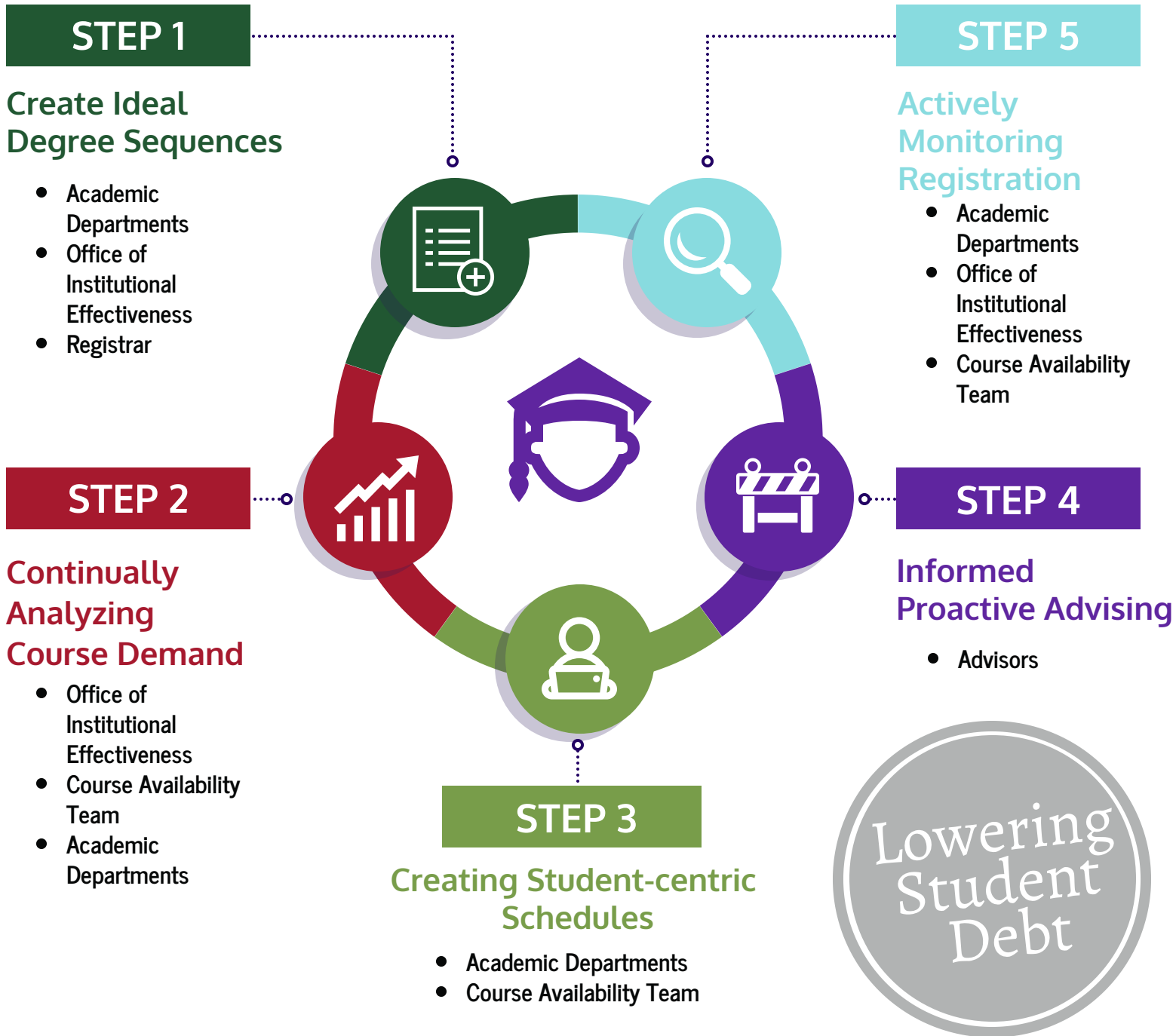
**Stephen F. Austin
State University
Quality Enhancement
Plan Addenda**



QEP

QUALITY ENHANCEMENT PLAN

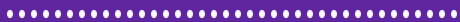
Functional Responsibilities





QEP

Quality Enhancement Plan



Lowering Student Debt

Positional Responsibilities

Executive Vice President and Provost:



- Executive Sponsorship
- Course Availability Team
- Leadership

Associate Provost:



- Operational direction and oversight

Director, Institutional Effectiveness:



- Daily operations and management
- Course offering analysis and interpretation
- Data Interpretation consultations

Assistant Director, Institutional Effectiveness:



- Assessment data collection and analysis
- Annual report development

Institutional Effectiveness Specialist



- Degree Map QA/QC
- Data analysis and publication
- Data interpretation consultations

Course Availability Team:



- Review course offerings recommendations
- Trend identification
- Resource review
- Lead college level discussions

Academic Departments:



- Data analysis
- Schedule Creation

Advisors:



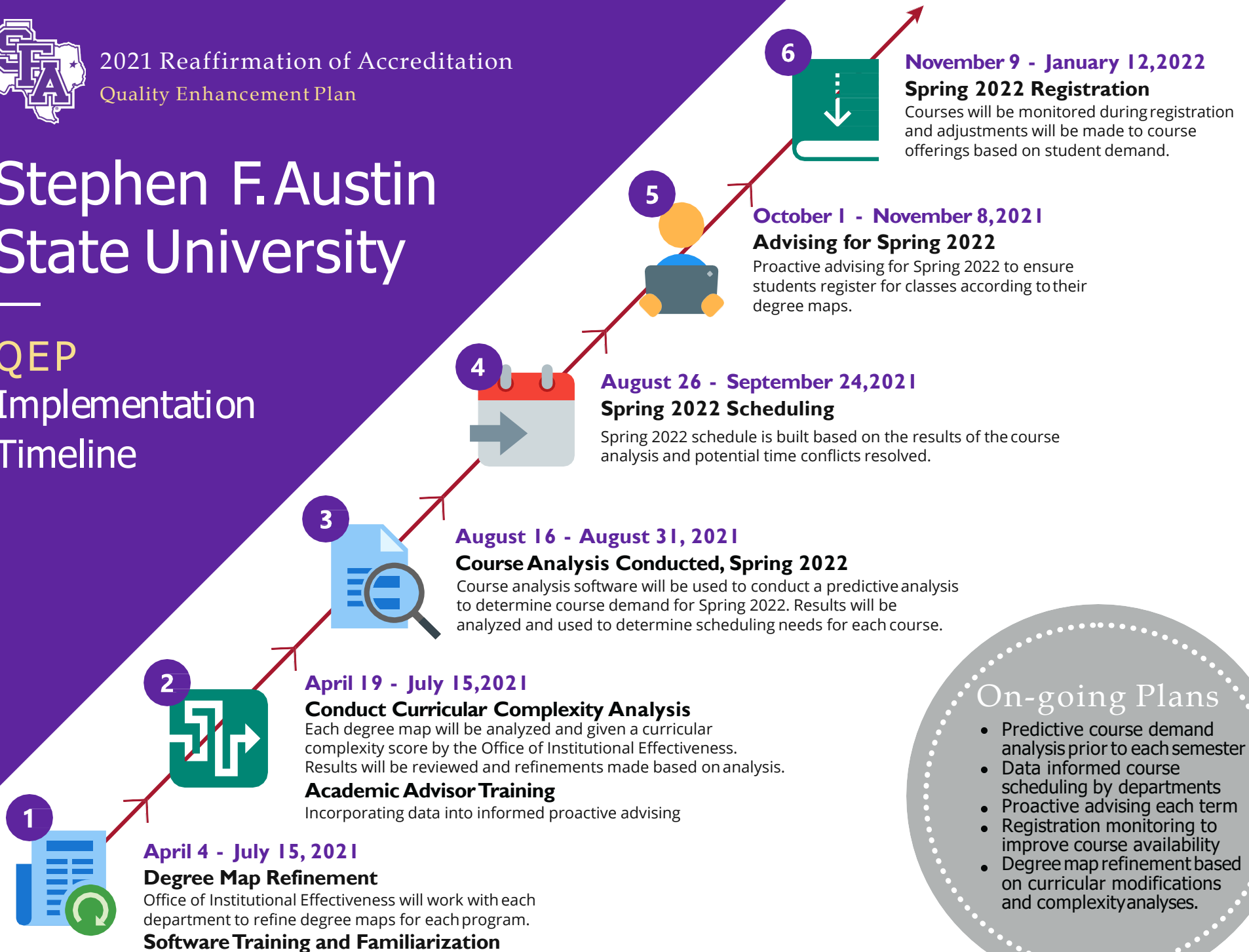
- Deliberate, structured student interventions
- Purposeful involvement w/students
- Reach out to students before they ask for help
- Inquiries into causes of the students' challenges



2021 Reaffirmation of Accreditation
Quality Enhancement Plan

Stephen F. Austin State University

QEP Implementation Timeline



On-going Plans

- Predictive course demand analysis prior to each semester
- Data informed course scheduling by departments
- Proactive advising each term
- Registration monitoring to improve course availability
- Degree map refinement based on curricular modifications and complexity analyses.

SFA QEP Assessment Timeline for Lowering Student Debt

			Leading		Lagging					
AY	Approx. Date	Milestone	Productive Credit Ratio	Momentum Year Objectives	Excess Semester Credit Hours	Time to Degree	4-year Graduation Rate	6-year Graduation Rate	Student Debt	
AY22	8/15/2021	AY22 QEP Kick-off (Analysis for Spring 22)								
	3/30/2022	Establish Baseline (AY21 Data)	✓	✓	✓	✓	✓	✓	✓	
	5/15/2022	Spring Productive Credit Report AY22 Momentum Year Report	✓	✓	✓					
AY 23	9/15/2022	Initial Fall Productive Credit Assessment	✓							
	12/20/2022	Fall Productive Credit Report Fall Momentum Year Report	✓	✓						
	2/15/2023	Initial Spring Productive Credit Report	✓							
	3/30/2023	AY22 Assessment Report	✓	✓	✓	✓	✓	✓	✓	
	Spring / Summer	AY22 Assessment Insights and Actions Workshop	Close the Loop							
	5/15/2023	Spring Productive Credit Report AY22 Excess SCH Report AY23 Momentum Year Assessment	✓	✓	✓					
AY 24	9/15/2023	Initial Fall Productive Credit Assessment	✓							
	12/20/2023	Fall Productive Credit Report Fall Momentum Year Report	✓	✓						
	2/15/2024	Initial Spring Productive Credit Report	✓							
	3/30/2024	AY23 Assessment Report	✓	✓	✓	✓	✓	✓	✓	
	Spring / Summer	AY23 Assessment Insights and Actions Workshop	Close the Loop							
	5/15/2024	Spring Productive Credit Report AY23 Excess SCH Report AY24 Momentum Year Assessment	✓	✓	✓					
AY 25	9/15/2024	Initial Fall Productive Credit Assessment	✓							
	12/20/2024	Fall Productive Credit Report Fall Momentum Year Report	✓	✓						
	2/15/2025	Initial Spring Productive Credit Report	✓							
	3/30/2025	AY24 Assessment Report	✓	✓	✓	✓	✓	✓	✓	
	Spring / Summer	AY24 Assessment Insights and Actions Workshop	Close the Loop							
	5/15/2025	Spring Productive Credit Report AY24 Excess SCH Report AY25 Momentum Year Assessment	✓	✓	✓					

AY	Approx. Date	Milestone	Productive Credit Ratio	Momentum Year Objectives	Excess Semester Credit Hours	Time to Degree	4-year Graduation Rate	6-year Graduation Rate	Student Debt	
AY 26	9/15/2025	Initial Fall Productive Credit Assessment	✓							
	12/20/2025	Fall Productive Credit Report Fall Momentum Year Report	✓	✓						
	2/15/2026	Initial Spring Productive Credit Report	✓							
	2/15/2026	5th Year Report Due to SACSCOC	✓	✓	✓	✓	✓	✓	✓	
	3/30/2026	AY25 Assessment Report	✓	✓	✓	✓	✓	✓	✓	
	Spring / Summer	AY25 Assessment Insights and Actions Workshop	Close the Loop							
	5/15/2026	Spring Productive Credit Report AY25 Excess SCH Report AY26 Momentum Year Assessment	✓	✓	✓					
AY 27	9/15/2026	Initial Fall Productive Credit Assessment	✓							
	12/20/2026	Fall Productive Credit Report Fall Momentum Year Report	✓	✓						
	2/15/2027	Initial Spring Productive Credit Report	✓							
	3/30/2027	AY26 Assessment Report	✓	✓	✓	✓	✓	✓	✓	
	Spring / Summer	AY26 Assessment Insights and Actions Workshop	Close the Loop							
	5/15/2027	Spring Productive Credit Report AY26 Excess SCH Report AY27 Momentum Year Assessment	✓	✓	✓					