

SFA Summer Band Camps

2024 Middle School Band Camp Reminders

June 16–21, 2024



**STEPHEN F. AUSTIN
STATE UNIVERSITY**
THE UNIVERSITY OF TEXAS SYSTEM
NACOGDOCHES, TEXAS

Camp Reminders

Resident Camper Reminders

- Packing List
- Residence Hall Reminders
- Resident Check-In

Commuter Camper Reminders

- Commuter Check-In
- Daily Commuter Pickup
- Optional Evening Activities

General Reminders

- Band Auditions
- Optional Middle School Informational Meeting
- Theme Days
- Concert Schedule
- Checkout Procedure

STEPHEN F. AUSTIN STATE UNIVERSITY

THE UNIVERSITY OF TEXAS SYSTEM ★ NACOGDOCHES, TEXAS

Resident Camper Reminders

Commuter Camper Reminders: Slide 8
General Camp Reminders: Slide 11

Residence Hall Reminders


- During camp, you will stay in Steen Hall.
- Both male and female campers will stay here and will be separated by the East and West Towers.
- Steen has suite style bathrooms meaning every bathroom is shared between two rooms. Please plan accordingly.
- Click [here](#) to learn more about [Steen Hall](#).
- Steen Hall: 609 E. College St., Nacogdoches, TX 75965



Packing List

- Label all personal belongings
 - SFA is not responsible for lost or stolen items
- Instrument supplies (mallets, reeds, valve oil, etc.)
 - Percussionists, bring your own sticks, mallets and practice pad; do not need to bring instruments
- Modest, casual, hot-weather clothes; bring a school shirt to show your school spirit!
- A light jacket; the buildings can get cool during rehearsals
- Hat and sunscreen
- Comfortable shoes - you will walk A LOT
- Twin XL-size bed sheets, pillow with case, blankets
- Bathroom supplies - the dorms have suite style bathrooms
 - Toiletries, towels, shower shoes, hygiene products, etc.
- Swimsuit with swim towel
- Notebook paper and pencil for classes
- Umbrella, rain poncho, rain boots, etc. - Prepare for rain!
- Optional snacks and beverages - your dorm will have a fridge
- Extra money for snacks, water, SFA gear, etc.

Band Camp Packing List

- Deodorant
 - Shower Shoes
 - Instrument and audition music
 - Comfortable Shoes
 - Umbrella
 - Jacket
 - Notebook and Pencil
 - Theme Day accessories
- 

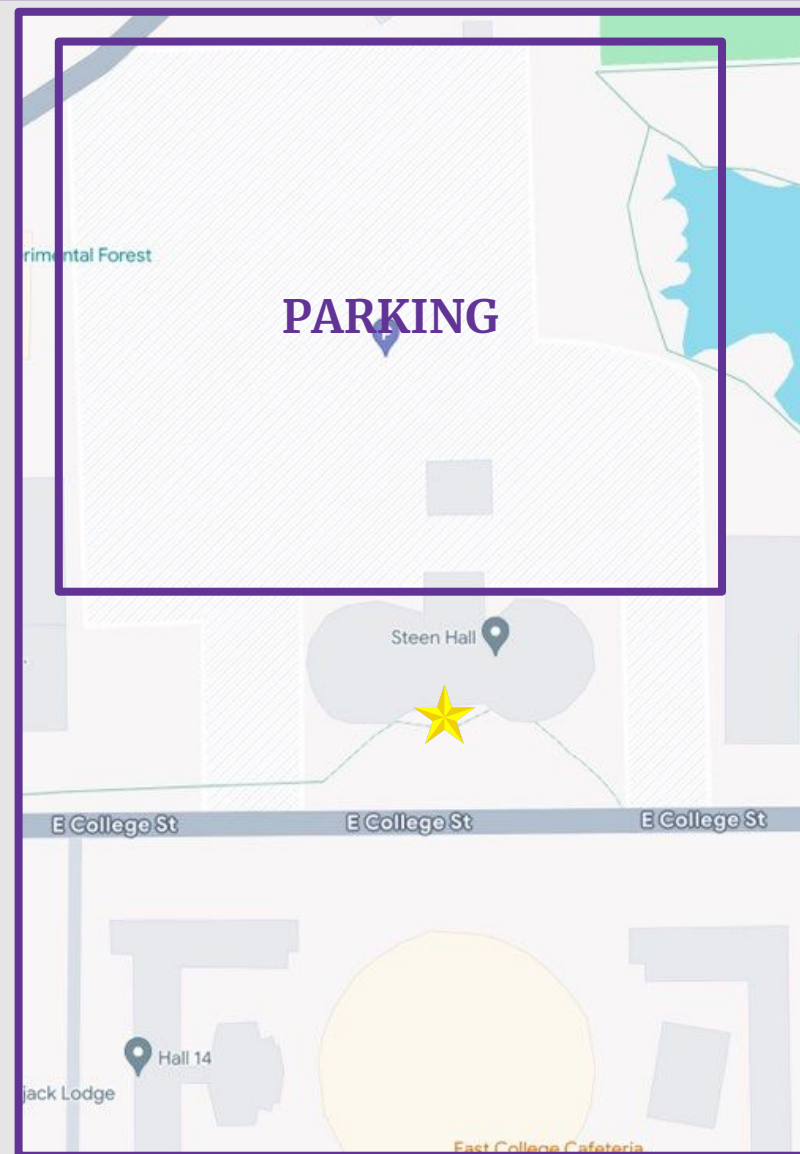
STEPHEN F. AUSTIN STATE UNIVERSITY

THE UNIVERSITY OF TEXAS SYSTEM ★ NACOGDOCHES, TEXAS

Dorm Check-In: Noon - 3 PM

1. When you arrive at Steen Hall, park in the areas outlined in purple on the map.
2. Follow the sidewalks and arrows to the check-in entrance (see star).
3. To enter Steen Hall, campers present either a Dorm Fast Pass or a Registration Ticket from the Band Office.
 - Fast Passes are sent to the email provided on your student's registration form once the registration is complete.
 - We will begin sending out Fast Passes on June 5th.
 - If the camper's registration is not complete, they must go to the Cole Concert Hall lobby to finalize your student's registration.
 - After your full payment and waivers are complete, you will be presented a Registration Ticket to show at check-in.

For questions about your student's registration prior to check-in, please email bandoffice@sfasu.edu.



STEPHEN F. AUSTIN STATE UNIVERSITY

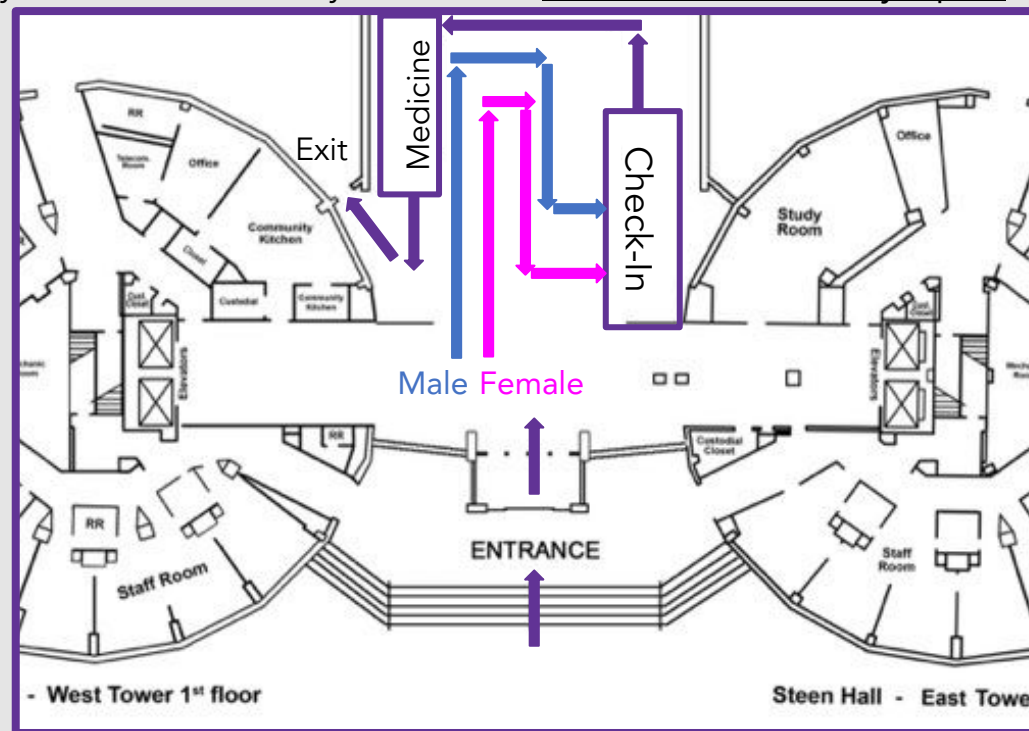
THE UNIVERSITY OF TEXAS SYSTEM ★ NACOGDOCHES, TEXAS

Dorm Check-In: Noon - 3 PM

- Once you enter Steen Hall, please follow the flow of traffic.
 - Please retrieve your luggage from your vehicle after you have checked in.
 - At check-in, you will receive your dorm key and access/meal card.
- After you have checked in, re-enter through the main entrance and proceed to the student's room. Even numbered rooms are in East Tower and odd numbered rooms are in the West Tower.
- Once you arrive to your room, your camp T-shirt, name tag and handbook will be placed on your bed.
- After you PLACE your luggage, please head to your audition site for your audition. You MUST audition by 4 p.m.

There will be a medication table at check-in. Please follow the steps below to drop off your student's medication.

- Medication must be placed in a bag or container.
- You must include a notecard with your student's name, medication instructions and daily dosage.
- Head counselors will provide the medication at the appropriate times for the camper to self-medicate.
- Students will be able to receive over-the-counter medication during camp at the counselor's discretion.



STEPHEN F. AUSTIN STATE UNIVERSITY

THE UNIVERSITY OF TEXAS SYSTEM ★ NACOGDOCHES, TEXAS

Commuter Camper Reminders

General Camp Reminders: Slide 11

STEPHEN F. AUSTIN STATE UNIVERSITY

THE UNIVERSITY OF TEXAS SYSTEM ★ NACOGDOCHES, TEXAS

Commuter Check-In: Noon - 3 PM

- Check-in is from noon to 3 p.m. in the lobby of the Wright Music Building.
- Please look for the “Commuter Check-In” sign. DO NOT enter the registration line in the Cole Concert Hall lobby. There will be signs and counselors to point you in the correct direction.
- At check-in, you will receive your camp t-shirt, name tag, lunch meal card and handbook.
- As soon as you check in, please locate your audition room. You must audition by 4 p.m.
- Commuters may go off campus for dinner or eat in the dining hall with the resident campers.
 - All lunch meals and Sunday night dinner are included in the commuter meal plan.
 - If commuters plan to eat dinner off campus on Sunday, please ensure they are back in the Wright Music Building no later than 6:45 p.m.
 - If your commuter student plans to eat dinner in the dining hall Monday-Thursday, bring at least \$13 to purchase dinner for each night.
- Follow the schedule provided in your handbook for the remainder of camp.



STEPHEN F. AUSTIN STATE UNIVERSITY

THE UNIVERSITY OF TEXAS SYSTEM ★ NACOGDOCHES, TEXAS

Daily Drop Off & Evening Pick Up

DAILY DROP-OFF

- Commuter campers will check in daily between 7:30 - 7:50 a.m. with the Commuter Counselor in front of the Wright Music Building.

EVENING PICKUP

- After daily activities conclude, commuters will be picked up at 5 p.m. at the Wright Music Building
 - All commuter campers must check out with the Commuter Counselor.

OPTIONAL EVENING ACTIVITIES

- If your commuter would like to stay for an evening activity, they must let the Commuter Counselor know and bring \$13 for dinner.
- If your student plans to stay for an evening activity, they will be picked up from Steen Hall at 9 p.m.



STEPHEN F. AUSTIN STATE UNIVERSITY

THE UNIVERSITY OF TEXAS SYSTEM ★ NACOGDOCHES, TEXAS

General Camp Reminders

STEPHEN F. AUSTIN STATE UNIVERSITY

THE UNIVERSITY OF TEXAS SYSTEM ★ NACOGDOCHES, TEXAS

Middle School Informational Meeting

- Middle school informational meetings are *OPTIONAL!*
- Meetings will occur between 1 - 4 p.m.
- This meeting runs approximately every 20-30 minutes.
- We understand this may be your student's first time away from home, so we encourage students, parents, guardians and band directors to attend!
- At the meeting our head counselors will discuss
 - Camp procedures
 - Rules of camp
 - Q&A session
- This meeting will be in the Wright Music Building in Room 160 - The Recital Hall



STEPHEN F. AUSTIN STATE UNIVERSITY

THE UNIVERSITY OF TEXAS SYSTEM ★ NACOGDOCHES, TEXAS

Theme Days

- Theme days are NOT required, but we highly encourage students to participate. Many of our faculty, staff and counselors participate in them as well!
- All theme days must align with the SFA Code of Conduct. Failure to do so will result in loss of theme days for all campers. Please ensure that you wear the appropriate footwear and warm weather clothing for camp as well.
- **Monday: Meow, Meow, Monday** - Wear your best cat-themed items. This could be cat ears, a cat shirt or other cat themed apparel!
- **Tuesday: Team-Up Tuesday** - Wear jerseys, T-shirts, baseball caps and other gear to represent your favorite sports team!
- **Wednesday: Adam Sandler Wednesday** - Wear basketball shorts, baggy clothes, backwards baseball cap, Hawaiian print polo or other comfortable clothing!
- **Thursday: Superhero Day** - Wear your favorite superhero hat, shirt or other superhero apparel. Bonus points if you have a cape!
- **Friday: Concert Best** - You are not required to wear your concert attire all day, but please make sure you have your concert clothes ready to wear for your performance!



STEPHEN F. AUSTIN STATE UNIVERSITY

THE UNIVERSITY OF TEXAS SYSTEM ★ NACOGDOCHES, TEXAS

Concert Schedule & Checkout Procedure

FRIDAY CONCERT SCHEDULE

- The band concert schedule will be released no later than the first day of camp on social media.
- At this time, concert times are scheduled between 10 a.m. to 3 pm. Your student will know the time of their concert after audition results are posted.
- Families who are unable to attend the performance can view the livestream at sfasu.edu/music. Please be sure to follow @sfasubandcamps on Facebook and Instagram for updates.

FRIDAY CHECKOUT PROCEDURES

- Your student will be assigned a checkout time depending on their schedule performance time.
 - Your student will refer to their handbook for their concert and checkout time.
- If you are a commuter, please find your designated commuter checkout counselor. More information about this will be given at camp.
- Prior to checkout, counselors will check the student's room for any room damages and/or left items.
- All campers must check out by 3 p.m.



On concert day, families and other spectators may pay hourly parking at the Wesley Foundation on East College Street across from the Wright Music Building.

STEPHEN F. AUSTIN STATE UNIVERSITY

THE UNIVERSITY OF TEXAS SYSTEM ★ NACOGDOCHES, TEXAS

We are so excited to see your musician at SFA's Middle School Summer Band Camp! If you have any questions, please contact us by emailing bandoffice@sfasu.edu or calling (936) 468-4702. Thanks, and axe 'em Jacks!

