

# 360°

## Global Learning Experiences

Making a Global Education Accessible to All



STUDY  
ABROAD  
ASSOCIATION

discoverED  
360°

# TABLE OF CONTENTS

---

- 3** Introduction and Overview
- 4** Signing up and Logging in to discoverED 360°
- 6** Navigating the discoverED 360° platform
- 8** Navigating the 360° Tour

**Watch Intro Video**



# Introduction

---

The innovative, immersive 360° GLE platform features self-paced, interactive 360° Global Supplemental Learning Experiences that can be used to internationalize the curriculum and provide all students and faculty access to international education, in an easy, effective, and engaging way, regardless of barriers.

Students and faculty who can't physically travel because of mobility limitations, lack of financial resources, lack of time, are simply unaware, or are facing travel restrictions can now have an in-depth and interactive international educational experience.

This is not a replacement for traditional study abroad, but an enhancement. A tool that goes hand-in-hand, that we can use to effectively promote traditional study abroad.

## Overview

---

- The 360° GLE annual membership provides institutions unlimited access and unlimited users.
- The 360° GLE resource library is categorized into four main areas of study: Humanities, Sciences, Business and Global Perspectives. New destinations, areas of study and topics are regularly added.
- The launch of 360° GLE features 9 Countries and 35 Locations
- 360° GLE contains over 50 hours of content provided by local professionals and experts in the field.
- Faculty can navigate the 360° GLE resource library and select entire virtual tours, or sections of virtual tours, to assign to students, or use in the classroom.
- Materials are accessible through: Smartphone, Tablet, Laptop, Desktop, Smartboard, Smart TV and Virtual Reality Goggles.

# Signing up and Logging in to discoverED 360°

---

1

Institution, or faculty share [Sign Up Link](#) with users

2

Users click on blue button SIGN UP and complete the registration form

Home SIGN UP LOGIN

First Name

Last Name

Your School Email Address

Additional (email or Facebook url)

Username

Password  Show

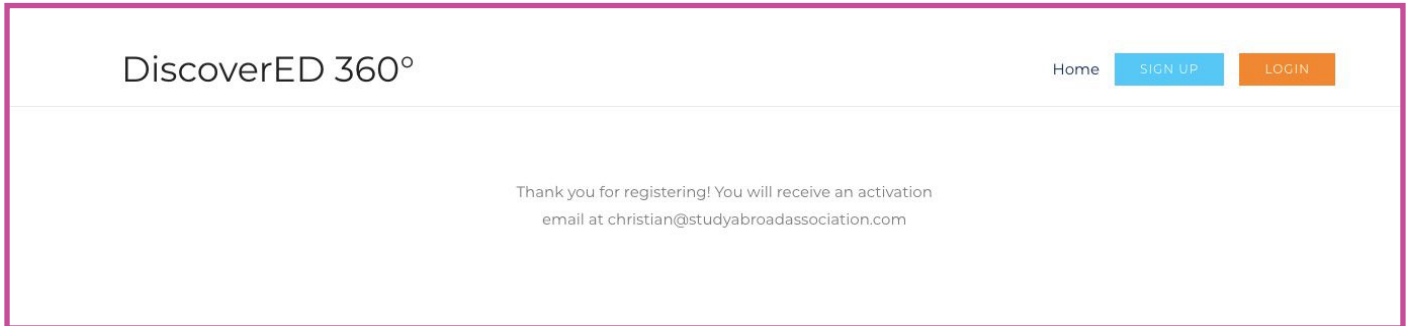
Confirm Password

I agree to the Terms of Service

SIGN UP

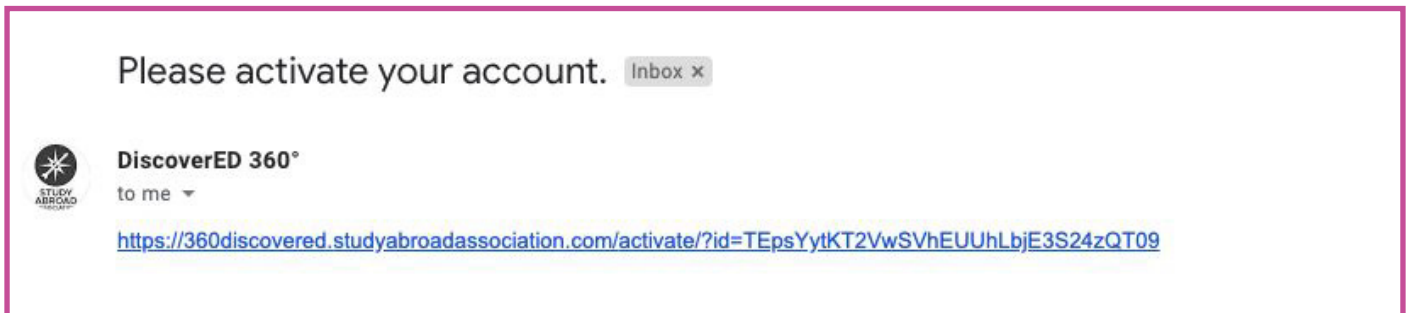
### 3

#### Users receive on screen confirmation



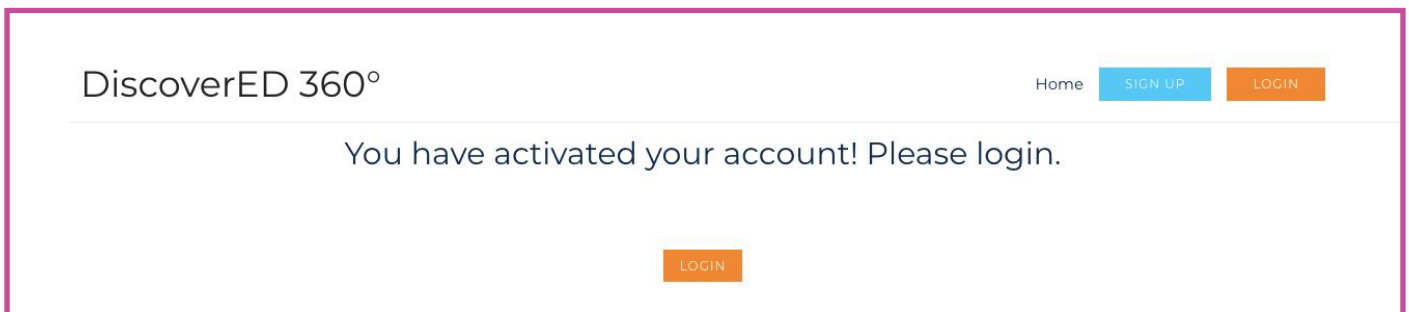
### 4

#### Users receive the activation link on their school email address



### 5

#### They click the link and activate their account

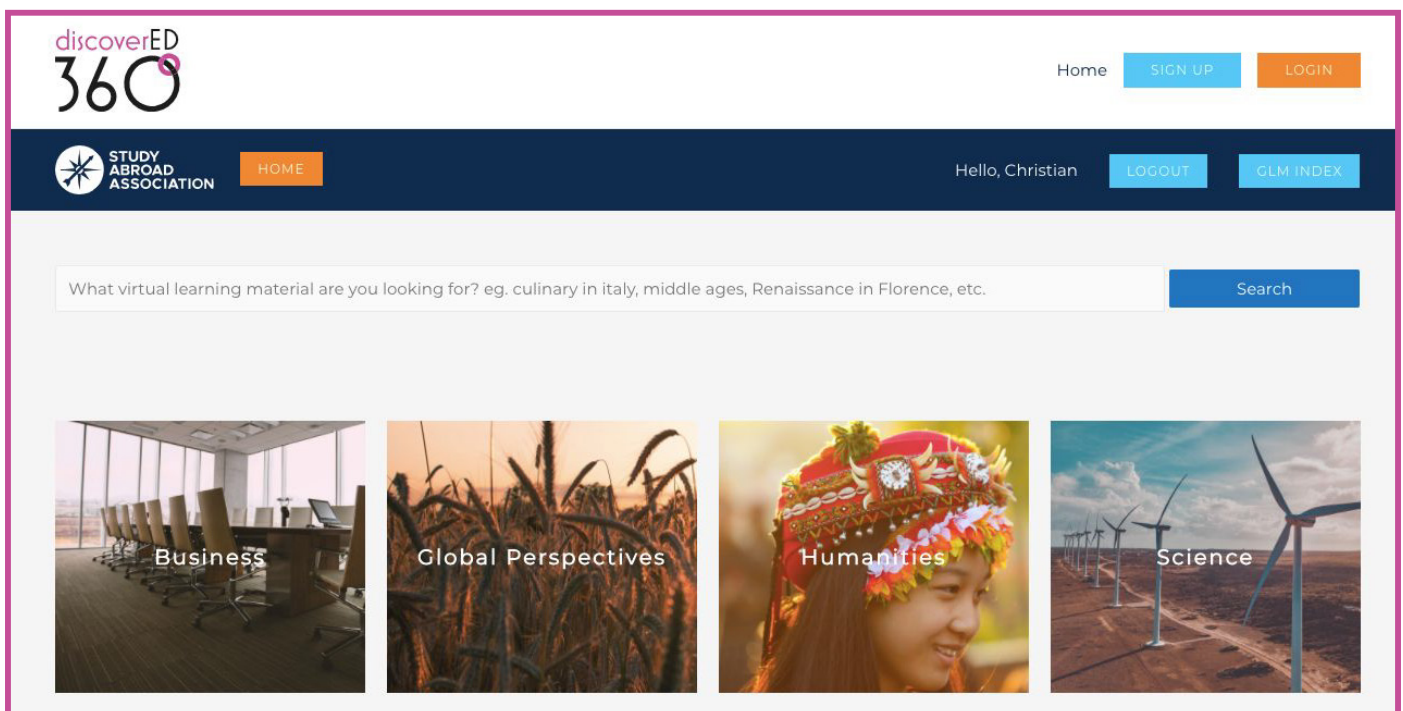


### 6

#### Users can proceed and login

# Navigating the discoverED 360° platform

[Watch Tutorial Video](#)



- Welcome to the discoverED 360° platform!
- You can go directly to the virtual tours by clicking on the area of study that your institution has subscribed to, or you can click on the GLE Index on the blue bar and see what is available in all of the featured tours. From the GLE Index you can also click on the link to your desired tour.
- As an example, we will select business.
- After selecting business, the available business themed tours will be displayed below the areas of study.
- You can choose your virtual tour by clicking DISCOVER.



Business



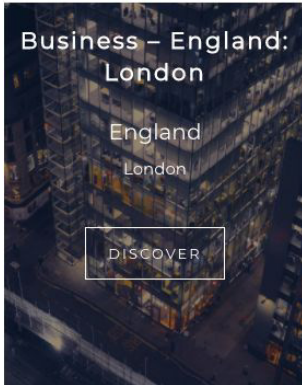
Global Perspectives



Humanities



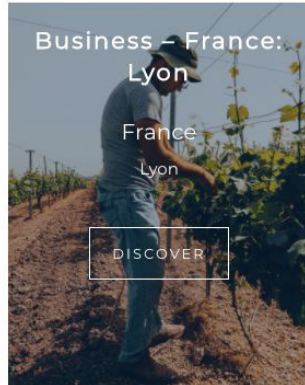
Science



Business – England:  
London

England  
London

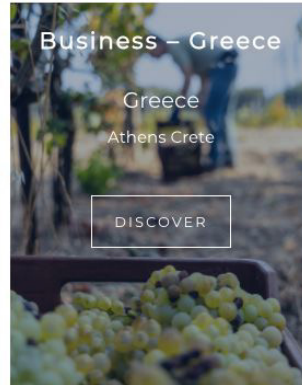
DISCOVER



Business – France:  
Lyon

France  
Lyon

DISCOVER



Business – Greece

Greece  
Athens Crete

DISCOVER

- When inside of your tour page, you will have an overview, as well as drop down menus on the right, listing the topics, locations and sites covered within the tour. From here you are ready to explore the 360° tour that is embedded on the page.
- You can share the tour link with your students by clicking the (Orange Share) button on the cover photo of the tour page. From here you can share with your students through your LMS, or however you prefer.

## England: London

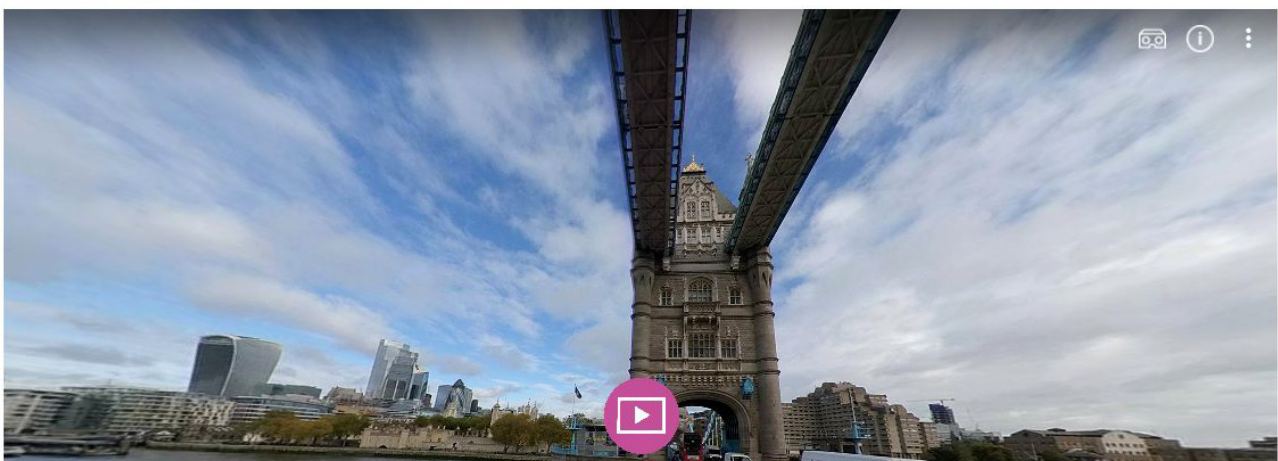
London is considered one of the main business hubs in the world. With a strong service-based economy and a flourishing entrepreneurial scene, London has it all when it comes to business.

Located between Asia and America, it's the only capital in the "ex-European" Union with English as the main language, while at the same time boasting one of the world's most diverse cosmopolitan populations. These are a few of the factors that make London a unique and strong Business market. During this virtual module we will cover various business environments from start-ups and entrepreneurship, to global supply chains, as well as other related topics such as cryptocurrencies and Brexit. Included also are walking tours of the Financial district.

▸ Topics:

▸ Locations:

▸ Sites:



# Navigating the 360° Tour

[Watch Tutorial Video](#)



## 1

**Explore your surroundings.**

**You are able to look in any direction inside of the 360° space.**

- If you're using a mouse, Left Click, hold down and drag the mouse.
- If you're using a trackpad, Click and swipe the opposite direction you wish to look.
- If you're using a smartphone, use your finger on the screen and drag the direction you wish to look.

## 2

**Zoom in and zoom out**

- If you're using a mouse, use your mouse wheel to zoom in and out.
- If you're using a trackpad, use two fingers simultaneously on the trackpad to zoom in and out.
- If you're using a smartphone, use two fingers on the screen to spread them away from each other and it will zoom in, do the same but pinch your two fingers towards each other and it will zoom out.

## 3

**Get to know your educational plugins**



**Educational video overviews provided by the local experts.**

Closed Captioning is available - click on the CC option on the Youtube video player.

Select your video quality inside the settings of the Youtube video player.





**360° videos are immersive videos that allow the user to look in different directions.**

If you're using a mouse or trackpad follow the same instructions under part one Navigating the Platform.

If you're using a mobile phone, click on the full screen option and you can use your finger on the screen, or you can physically turn with the smartphone in your hand.



**High definition photos**



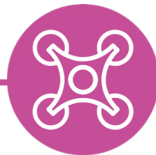
**Text boxes with facts and figures**



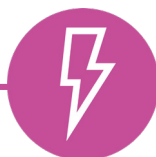
**Quizzes**



**External weblinks for further exploration**



**High definition aerial videos and photos**

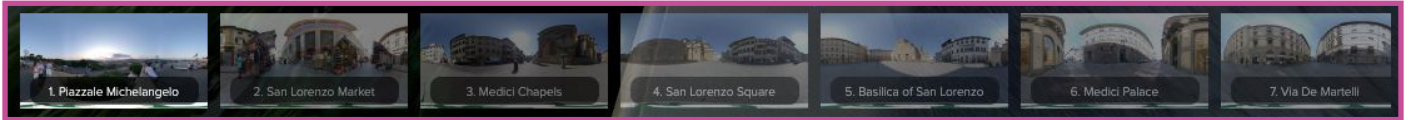


**Time Warp is a moving timelapse that allows you to cover more ground in a short amount of time**

## 4

### Scene Order

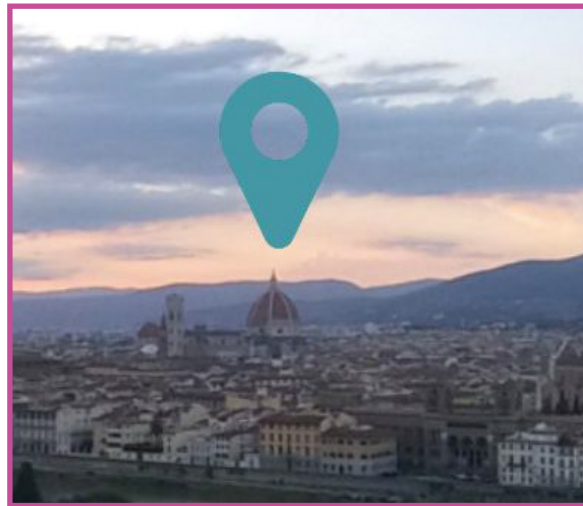
Located at the bottom of the screen inside your 360° GLE learning space is the scene selection. This provides you an overview of the scenes in your virtual tour and the locations that will be covered. You are able to navigate the tour by clicking on these scenes, or by following the blue locators in the 360° GLE which will take you to the next scene.



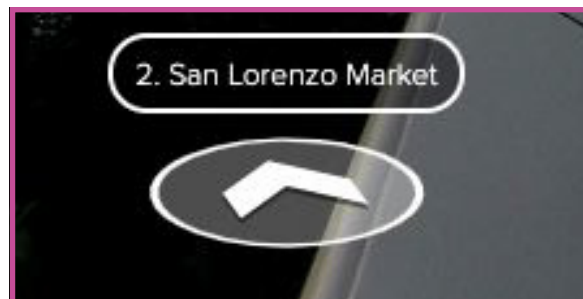
## 5

### Moving to the Next Scene

Simply click on the blue locator found in each scene, and you'll be transported to the next stop on your journey.



Additionally, you can look to the bottom of your screen and you'll see a hovering directional arrow with the scene name of the next scene. You can click on this arrow and be transported to the next scene.



## 6

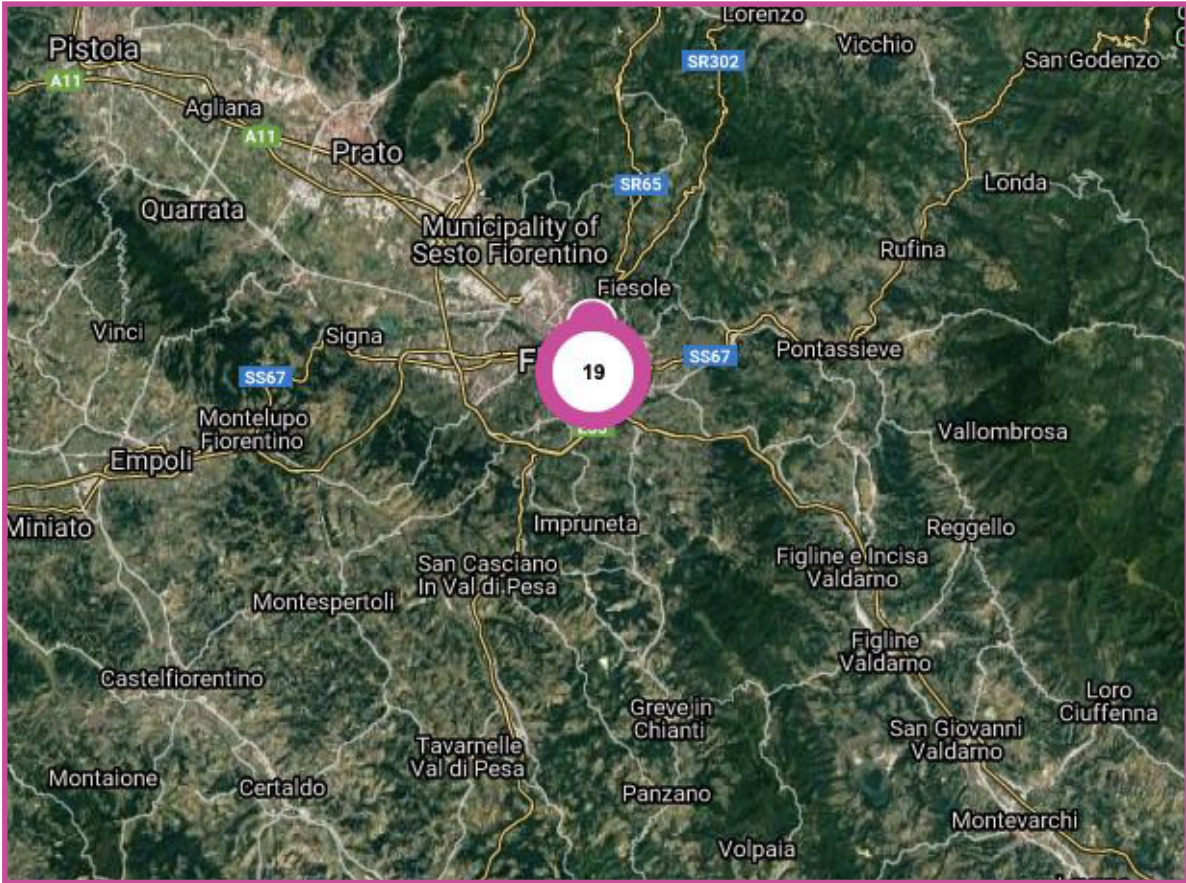
### Full Screen and Removing Hotspots

In the top right corner of the 360° GLE you will see three dots in a vertical row, inside you have the option to go in and out of full screen and to remove and bring back the Hotspots (educational plugins) from the screen.

# 7

## Geotagged Navigation Satellite Map

Through geotagging, every scene contains the exact location of where the 360° photo was taken. Users can navigate scenes through the map. Inside of the pink circle there is a number that represents the number of scenes within that location. Below, you can see 19 scenes.



If you continue to zoom in, the scenes will split into sub locations and eventually only individual scenes.

